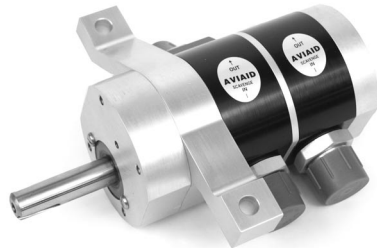
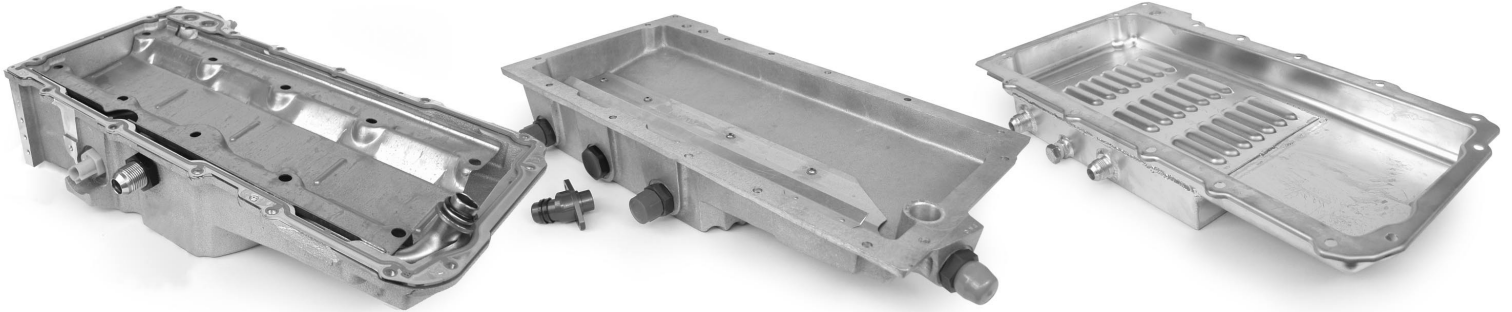
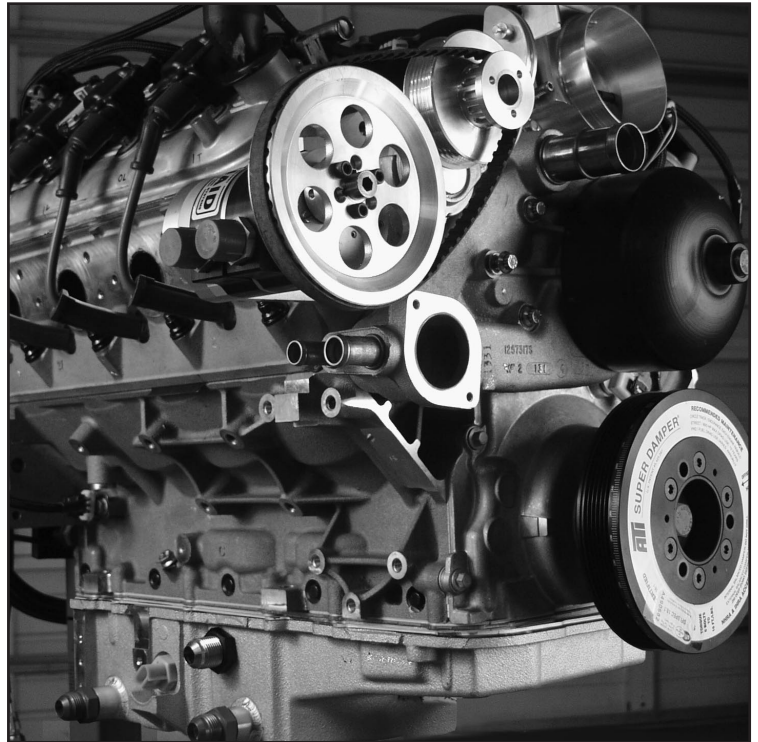
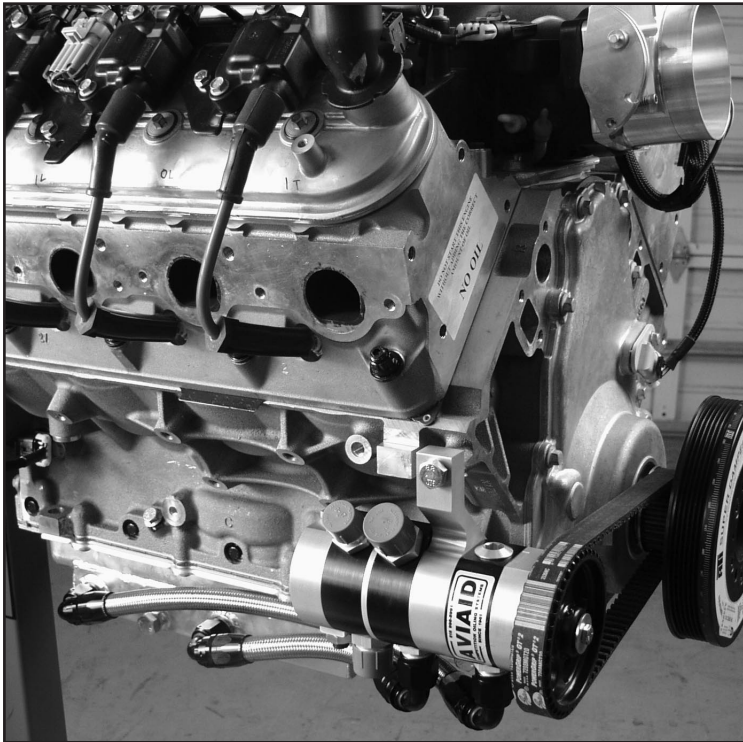


AVIAID

DRY SUMP OIL SYSTEMS FOR FOR GM LS1-LS6-SERIES ENGINES



HEAD MOUNT

A/C MOUNT

BLOCK MOUNT

Applicable to C5 and C6 Corvette and Gen IV F-body Camaro/Firebird, or other vehicles in which GM LS1 through LS7 engines are installed, such as street rods, muscle cars, spec race cars, etc.

SYSTEM "LS-A"

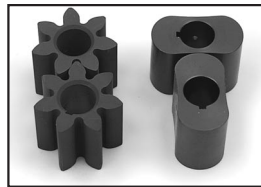
Notes: Designed for street use and mild competition. Uses OEM pump for pressure. Retains use of factory air conditioning and other accessories.



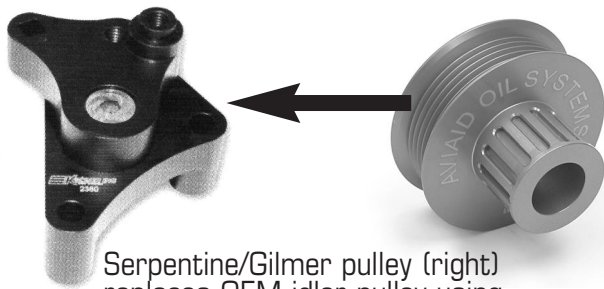
2-section dry sump pump with bracket for mounting to the cylinder head



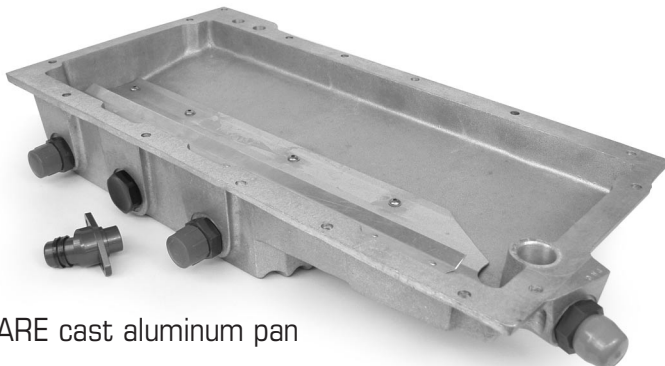
Optional Series 2 pump with spur gears or Roots type impellers



Pump drive pulley for Gilmer belt



Serpentine/Gilmer pulley (right) replaces OEM idler pulley using a fixed belt tensioner (left)



ARE cast aluminum pan



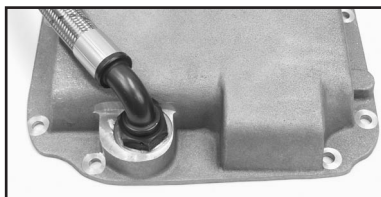
Includes:

- Aviaid 2-section dry sump pump (scavenge only) with Gilmer drive gear
- Bracket mounting pump to cylinder head
- Oil pan (choice of 2)
 - Modified LS2 cast pan
 - ARE cast aluminum pan
- Sump tanks (choice of 3)
 - OEM Corvette Z06 (optional internal baffle)
 - 6" diameter round (8 or 10-quart system capacity)
 - 9" diameter round (12 quart system capacity)
- Sump tank vent, heater and sight tube (optional)
- Serpentine/Gilmer drive pulley (replaces OEM serpentine idler pulley)
- All necessary lines and fittings (optional)

Features/Benefits:

- Retains factory air conditioning
- Eliminates oil starvation in hard cornering and high RPM operation
- Cooler operating temperatures
- Larger lubrication system capacity
- Eliminates parasitic horsepower loss through excessive windage
- Provides more usable power

Optimum lubrication for LS7 engines can be obtained by using this replacement pan, the LS-A pump, and the Z06 tank insert. This "stock" type system is competition caliber, but can be used in street applications.



Pans available to fit stock leaf spring or coil-over suspensions

SYSTEM "LS-B"

Notes: Engineered for serious club racers. Used on C5R Corvettes at LeMans. Streetable. Mounts to factory air conditioning bracket. Uses OEM pump for pressure.



Includes:

- Aviaid 2 or 3-section dry sump pump (scavenge only) with Serpentine drive gear
- Adapter mounting pump to air conditioning bracket
- Oil pan (choice of 2)
 - Modified LS2 cast pan
 - ARE cast aluminum pan
- Sump tanks (choice of 3)
 - OEM Corvette Z06 (optional internal baffle)
 - 6" diameter round (8 or 10-quart system capacity)
 - 9" diameter round (12 quart system capacity)
- Sump tank vent, heater and sight tube (optional)
- Special grooved serpentine belt
- All necessary lines and fittings (optional)
- ATI Super Damper with special hub*
(* hub available separately if engine already equipped w/ATI damper)

Features/Benefits:

- Enhanced scavenge capacity. Can provide 8-10 inches vacuum.
- Provides more usable power
- Eliminates oil starvation in hard cornering and high RPM operation
- Cooler operating temperatures
- Increased lubrication system capacity
- Eliminates parasitic horsepower loss through excessive windage
- Compatible with OEM front drive assembly (water pump, alternator, etc.)

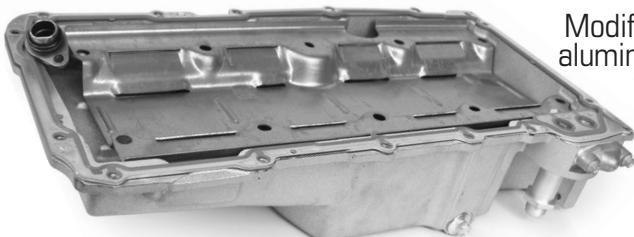


2-section dry sump pump with bracket to attach pump to the factory air conditioning bracket

ATI Super Damper with special Aviaid Serpentine hub



Z06 dry sump tank with optional insert to better control oil and improve flow



Modified LS2 cast aluminum pan with windage tray



ARE cast aluminum pan with windage tray

SYSTEM "LS-C"

Note: Versatile system designed for use in applications from street to heavy competition. Pump mounts directly to block. Also used to convert ASA cars to full dry sump (special hub works with existing ATI damper)



3-section dry sump pump with mounts



Pump-to-pan lines and fittings. Other lines and fittings available separately



ATI SuperDamper with HTD drive hub

Special ASA hub for use with ATI SuperDamper

ARE cast aluminum pan with windage tray

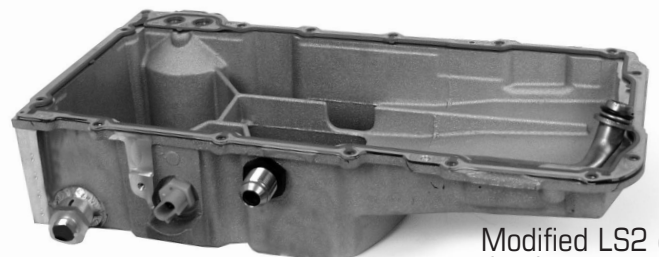


Includes:

- Aviaid 3-section dry sump pump (1 pressure, 2 scavenge sections) with LS-specific non-adjustable block mount and HTD gear drive
- Stamped steel dry sump pan with screened pickup and louvered windage tray
- ARE cast aluminum pan (optional)
- Sump tanks (choice of 3)
 - OEM Corvette Z06 (optional internal baffle)
 - 6" diameter round (8 or 10-quart system capacity)
 - 9" diameter round (12 quart system capacity)
- Sump tank vent, heater and sight tube (optional)
- ATI Super Damper with Aviaid HTD drive hub
- HTD drive belt and hardware
- Pump-to-pan scavenge lines and fittings
- Application-specific plumbing kit available

Features/Benefits:

- Provides ability to regulate oil pressure
- No RPM limit
- Eliminates oil starvation in hard cornering and high RPM operation
- Cooler operating temperatures
- Larger lubrication system capacity
- Eliminates parasitic horsepower loss through excessive windage
- Provides more usable power



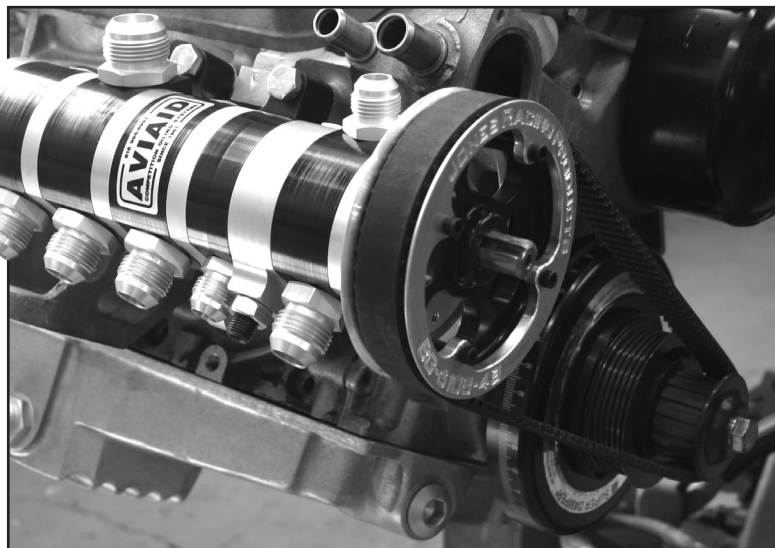
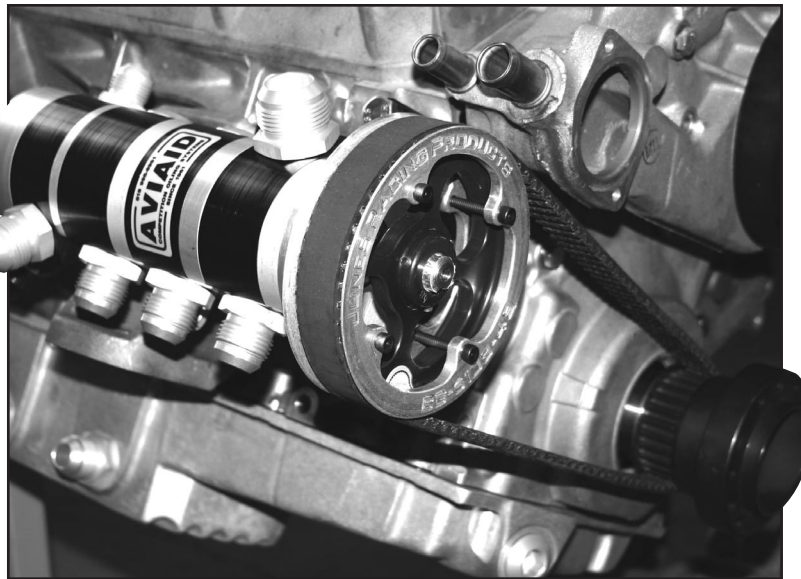
Modified LS2 cast aluminum pan with windage tray

SYSTEM "LS-D"

Note: Designed for all-out competition.
Uses 4 or 5-stage pump configured to the exact requirements of the application.

Includes:

- Aviaid 4 or 5-section dry sump pump with Gilmer drive gear
- Bracket mounting pump to engine block (adjustable)
- Oil pan (choice of 3)
 - Modified LS2 cast pan
 - ARE cast aluminum pan
 - Stamped steel pan w/screened pickup and louvered windage tray
- Sump tanks (choice of 3)
 - OEM Corvette Z06 (optional internal baffle)
 - 6" diameter round (8 or 10-quart system capacity)
 - 9" diameter round (12 quart system capacity)
- Sump tank vent, heater and sight tube (optional)
- HTD drive belt
- All necessary lines and fittings (optional)



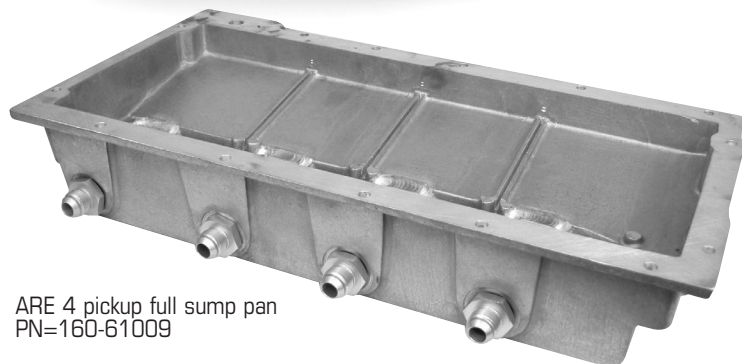
ATI SuperDamper with HTD drive hub



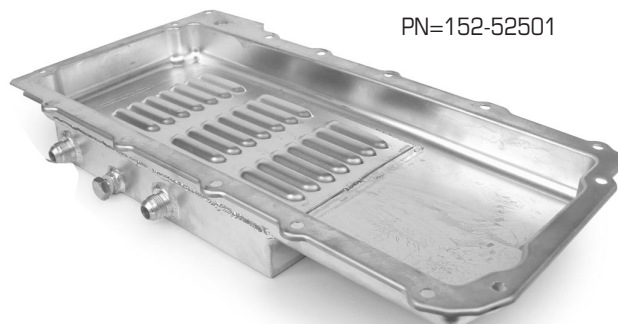
ATI-BBC LS Damper Drive Accessory



Close-up of HTD drive belt



ARE 4 pickup full sump pan
PN=160-61009



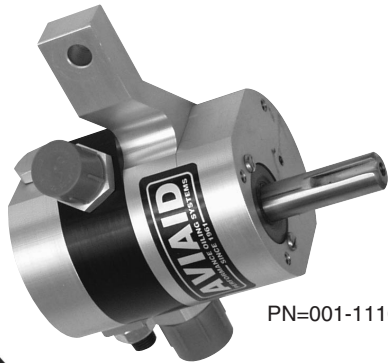
PN=152-52501

Features/Benefits:

- Adjustable oil pressure and significantly increased volume
- Eliminates oil starvation in hard cornering and high RPM operation
- Cooler operating temperatures
- Larger lubrication system capacity
- Eliminates parasitic horsepower loss through excessive windage
- Provides more usable power

SYSTEM "LS-E"

Note: External wet sump pump eliminates need for OEM unit. Provides increased volume and pressure adjustability.



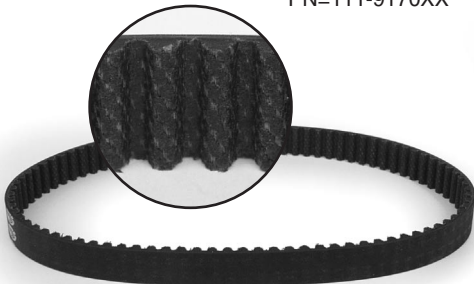
PN=001-1110-1082



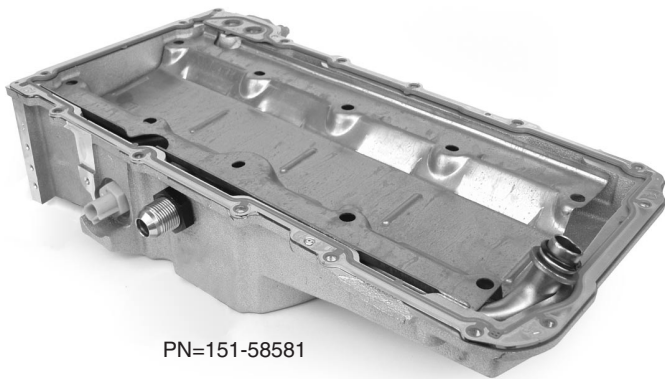
PN=104-40082



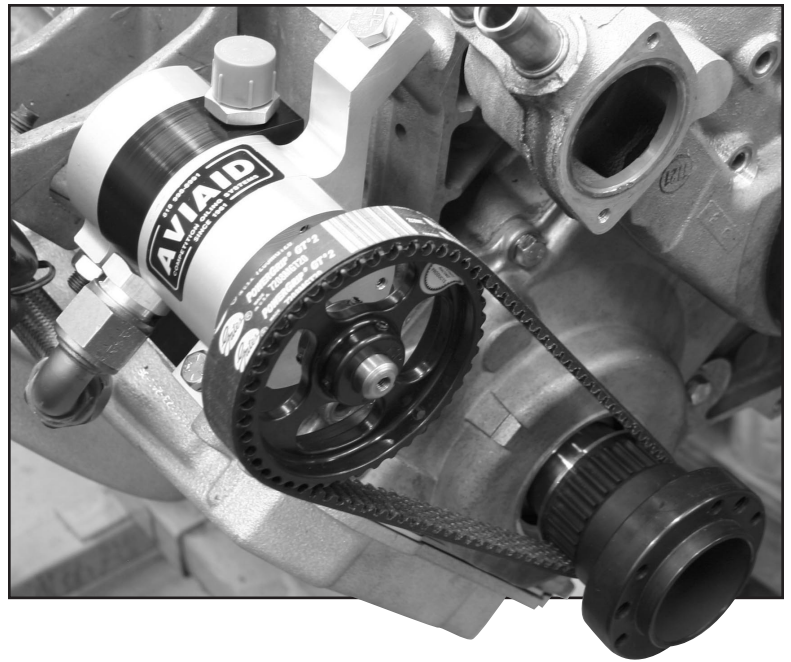
PN=111-9170XX



PN=104-46450-XXX



PN=151-58581



Includes:

- Aviaid single stage wet sump pump with HTD drive gear
- Mounts directly to block
- Modified LS2 cast pan
- Also works with any wet sump manufacture pan with external pick-up
- HTD drive belt
- All necessary lines and fittings (optional)
- Crank hub (can accommodate balancer)
- Available for "F" or "Y" front drive

Features/Benefits:

- Enhanced scavenge ability
- Provides more usable power
- Eliminates oil starvation in hard cornering and high RPM operation
- Cooler operating temperatures
- Compatible with OEM front drive assembly (water pump, alternator, etc.)
- Clears factory motor mounts

AVIAID Oil Systems

LS "E" External Wet Sump components – Single stage pump configurable to requirements – 8 to 20 GPM available – listed pump @ 12 GPM. – not shown on LS Systems sheet.

1.	1 Stage Pump	001-11100	572.16
	w/ 45 degree outlet housing	001-30131	
2.	Pump Adapter Bracket	104-40082	36.00
3.	Bolt Kit LS Direct Mount	104-40018-82-1	9.75
4.	ATI F-body Damper Assy w/drive	111-917XXX "F" or "Y"	562.44
5.	Oil Pump Pulley	105-6103-XX "F" or "Y"	86.01
6.	Belt	104-46450-XXX "F" or "Y"	30.48
			\$1,296.84

LS "A" Scavenge Only Pump Dry Sump System — Cylinder Head Mount

1.	2 Section Cylinder Head Mount	009-92100	570.97
	w/ 45 & 90 degree port housings	101-30130-02&04	
2.	Cylinder Head Mount Spacer	104-40047	38.60
3.	LS Serp/Gilmer Idler Pulley	104-VPPG402	102.00
4.	LS Fixed Belt Tensioner	109-4425	135.00
5.	LS Oil Pump 46T Gilmer Pulley	104-TP100	99.00
6.	225L050 Gilmer Belt	104-40805-225 1	2.42
7.	ARE LS pan w/ ftgs	160-1005	886.50
			\$1,844.49

8.	S2 2 Section Gear Pump	002-22100	Add 55.00
9.	S2 2 Section Rotor Pump	002-22500	Add 130.00

NOTE: Call for details and pricing on our LS7 upgrade package for Z06 Corvettes. This package includes a replacement pan, single-section pump and insert for the Z06 dry sump tank

LS "B" 2 & 3 Section Scavenge Only Dry Sump Pump System — AC bracket mount

1.	2 Section AC Mount Pump	009-92200	629.41
	w/ 45 degree port housing	101-30140-02	
3.	Serpentine pump belt	160-4032	28.50
4.	Serpentine Idler Pulley Assembly	160-1002-3	93.00
5.	Serpentine Pump Pulley	160-1002-2	93.75
6.	LS 2 Pickup Pan w/ fittings	160-1005	789.75
7.	ATI 'F' or 'Y' Damper w/ drive	111-917xxx	562.54
			\$2,196.95

Alternate 3 section pump w/ 3 pickup pan – add			202.00
			\$2,398.95

3 Gallon Tank Assy w/Ftgs/Brkts	110-50030	492.50
Tank Vent Filter	110-84115	55.47
Remote Filter Mount	104-40201	84.00
Remote Breather Tank w/ ftgs	110-50220	117.65

AVIAID Oil Systems

LS "C" 3 Stage Dry Sump System components

1.	3 Stage Dry Sump Pump w/ 2 45d port housings	001-1311X "F" or "Y" 101-30130-02	889.52
2.	Pump Adapter Bracket	104-40082	36.00
3.	Bolt Kit LS Direct Mount	104-40018-82-1	9.75
4.	ATI F-body Damper Assy w/drive	111-917XXX "F" or "Y"	562.44
6.	Oil Pump Pulley	105-6103-XX "F" or "Y"	86.01
7.	Belt	104-46450-XXX "F" or "Y"	30.48
8.	2 Pickup Steel Dry Sump Pan	152-52501	349.00
9.	Scavenge Hose Assy	01 123-1000-001	55.04
10.	Scavenge Hose Assy	02 123-1000-002	55.04
11.	3 Gallon Tank Assy w/Ftgs/Brkts	110-50030	492.50
12.	Tank Vent Filter	110-84115	55.47
13.	Remote Filter Mount	104-40201	84.00

\$2,705.25

For existing F-body ATI damper assembly deduct \$364.00 to supply replacement hub with pump drive gear. Applicable to ASA system conversions

LS "D" 4 Stage Dry Sump System Components – Configured to application. Typical of road race or drag race configuration. FIA GT-3 system pricing on request

1.	4 Stage AVIAID Dry Sump Pump	001-14122 10	1031.34
	Install internal bearing section	101-30402-00	
	Install 45 degree outlet scav body	101-30140-02	
	Install 45 degree outlet pres body	101-30130-02	
	Install -16 scav outlet fitting	108-30842	
2.	LS Swivel mount block adapter	104-40082-39	54.00
3.	Mount shoulder bolt 672-1110-100 16.11		
4.	ARE Cast Aluminum Dry Sump Pan w/ -12 Screen Fittings x 3 160.36012	160-1004	816.75
6.	LS ATI Damper Assembly	111-91700	518.29
7.	BBC Pin Drive Mandrel	104-30414	61.40
8.	18T Pin Drive Pulley	119-15218	48.00
9.	Pin Drive Guide Washer	119-43005	17.60
10.	Pin Drive Hex Hat Washer	119-44501	30.00
11.	Pump Pulley 32T Gilmer	104-40630	64.00
12.	322L100 Gilmer Drive Belt	104-40872	25.88
13.	3 Gallon Tank Assy w/Ftgs/Brkts	110-50030	492.50
14.	Tank Vent Filter	110-84115	55.47
15.	Remote Filter Mount	104-40201	84.00

\$3,315.34

FIA – GT3 Corvette homologated configuration available on request – Contact us for details.



10041 Canoga Ave., Chatsworth, CA 91311
 (fax: 818-998-8993) email: aviaid@aol.com
818-998-8991
"Lubrication Solutions Since 1961"